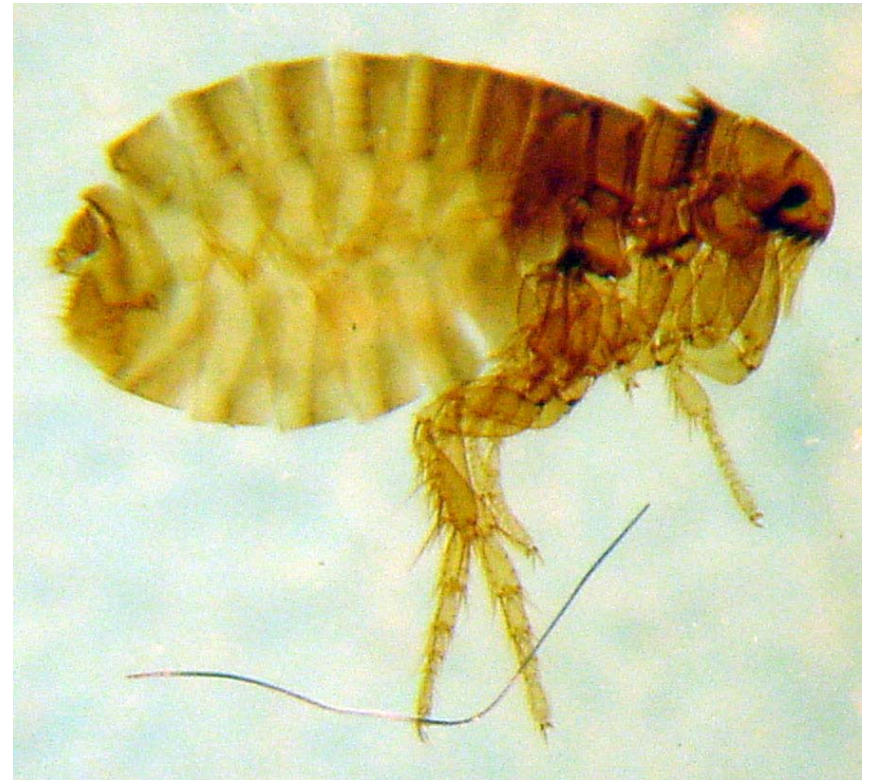
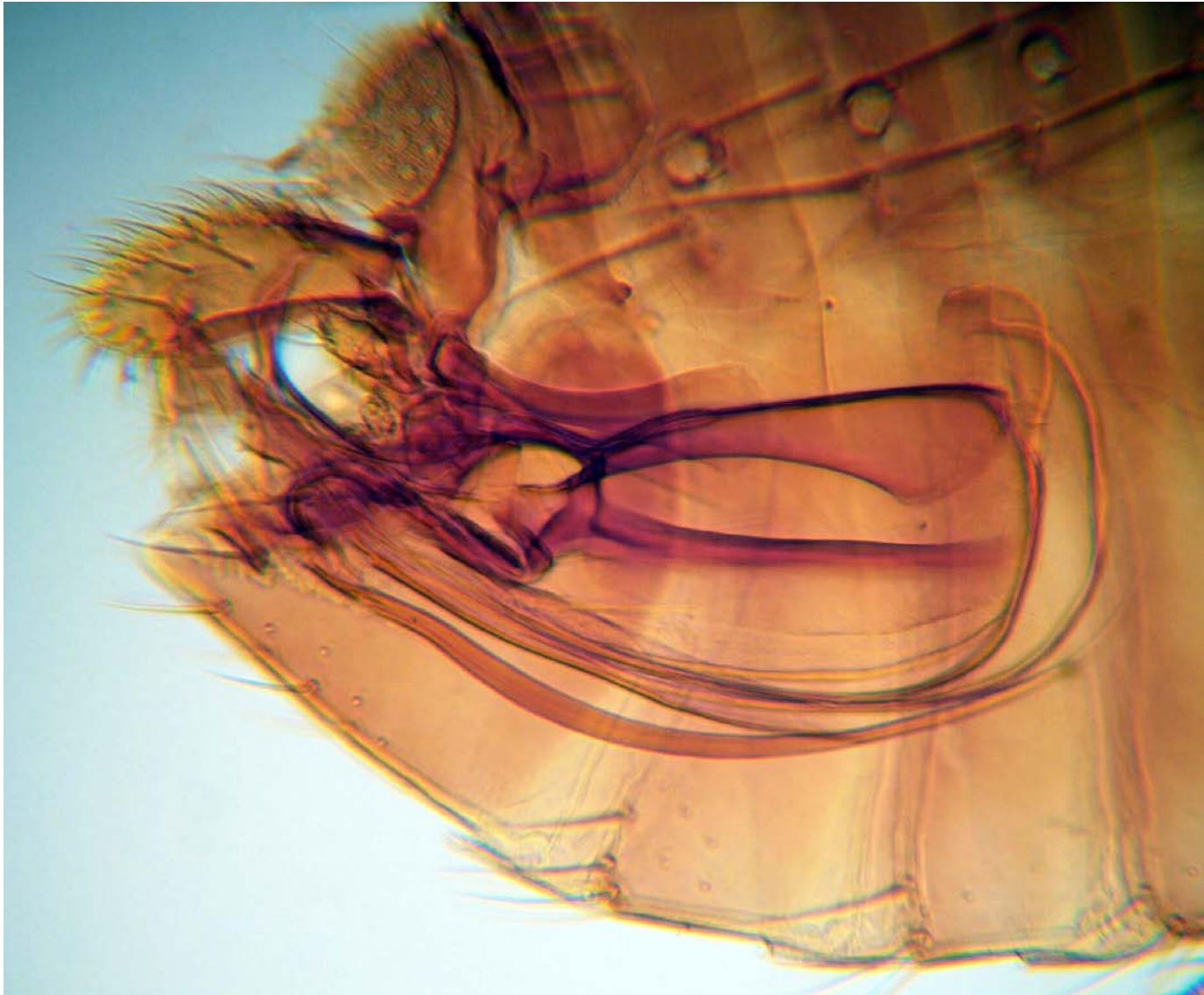


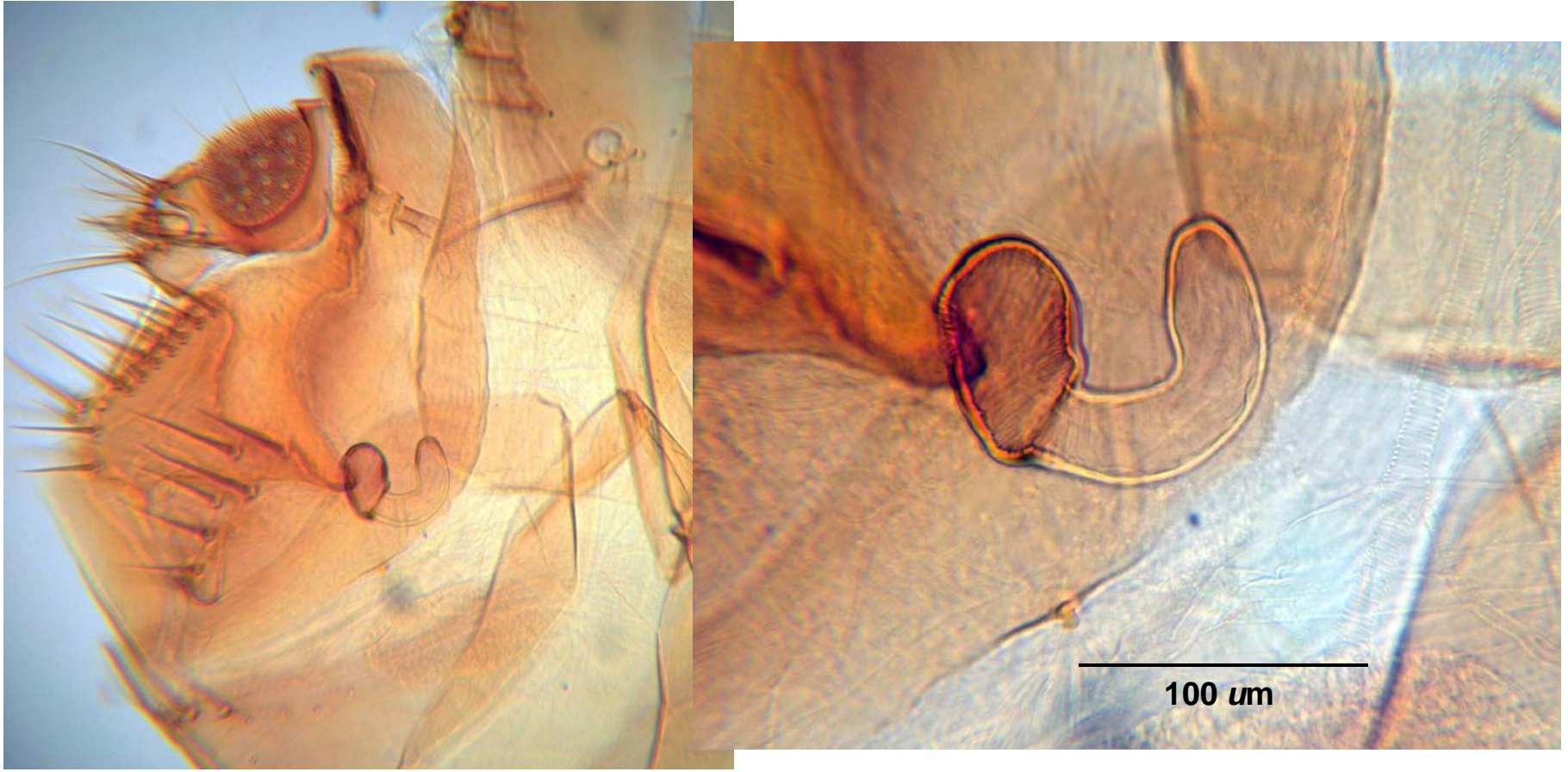
Ctenocephalides canis male (left) and female (right).



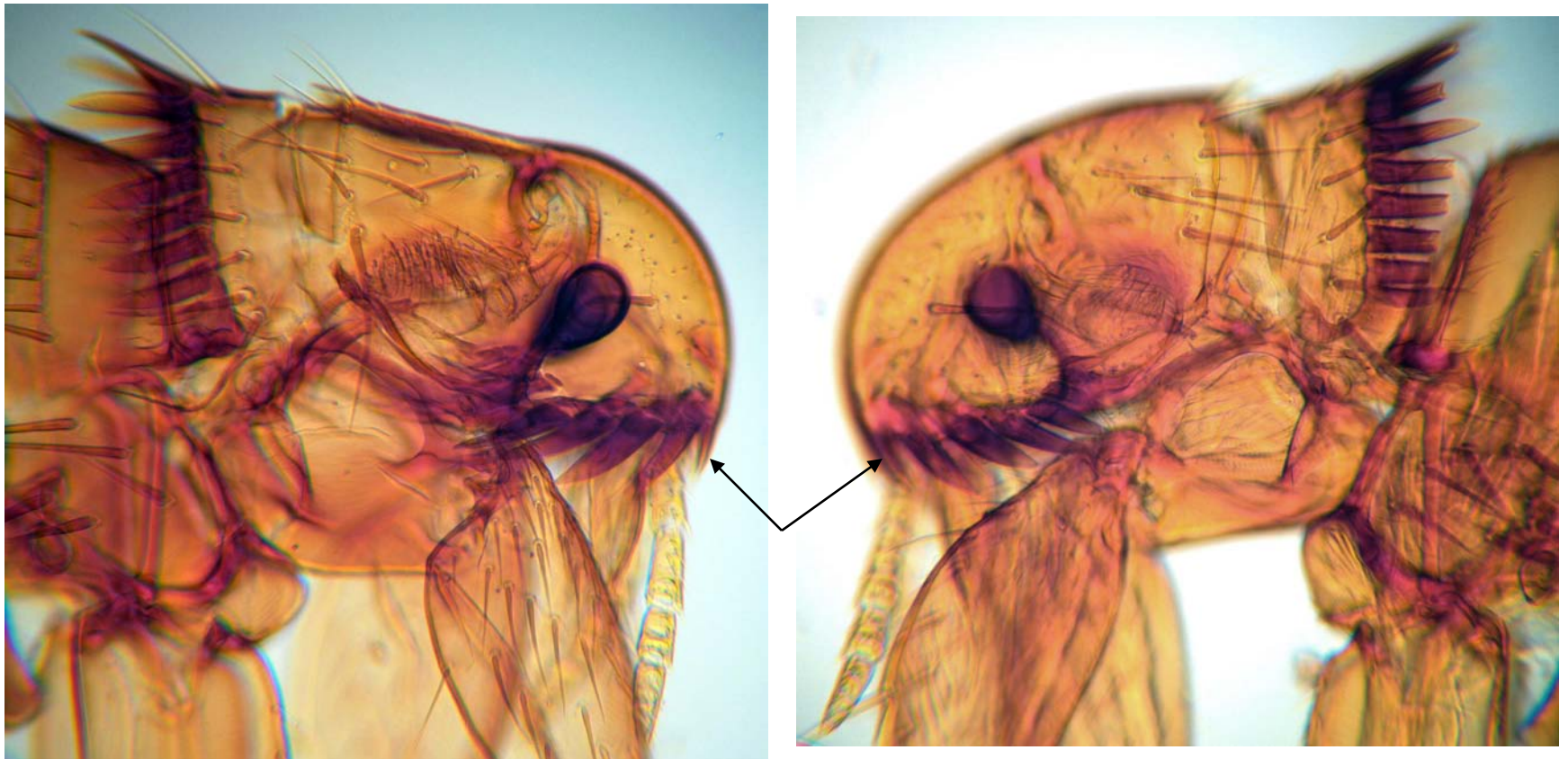
C. canis, male genitalia.

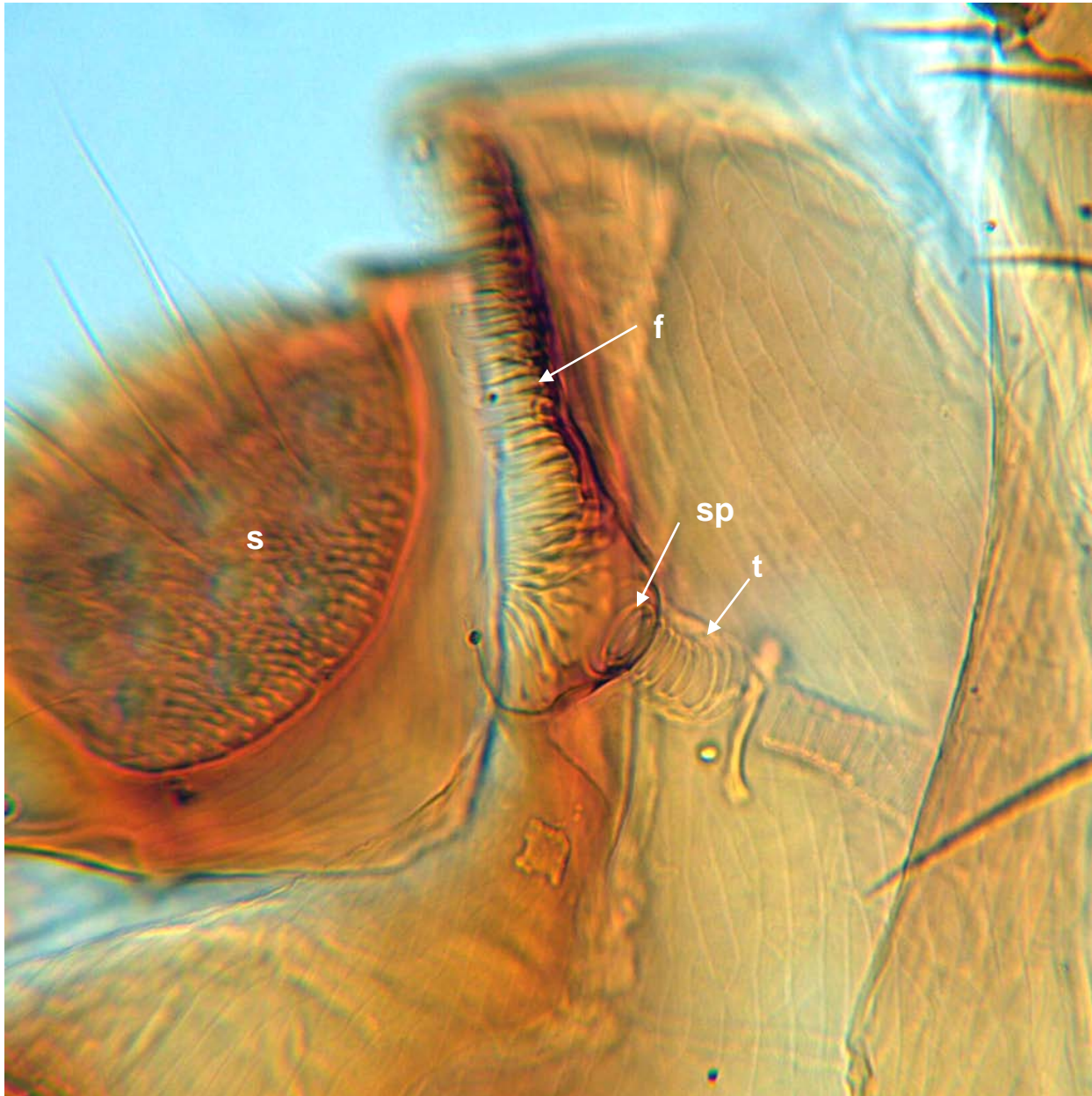


C. canis, female, spermatheca.



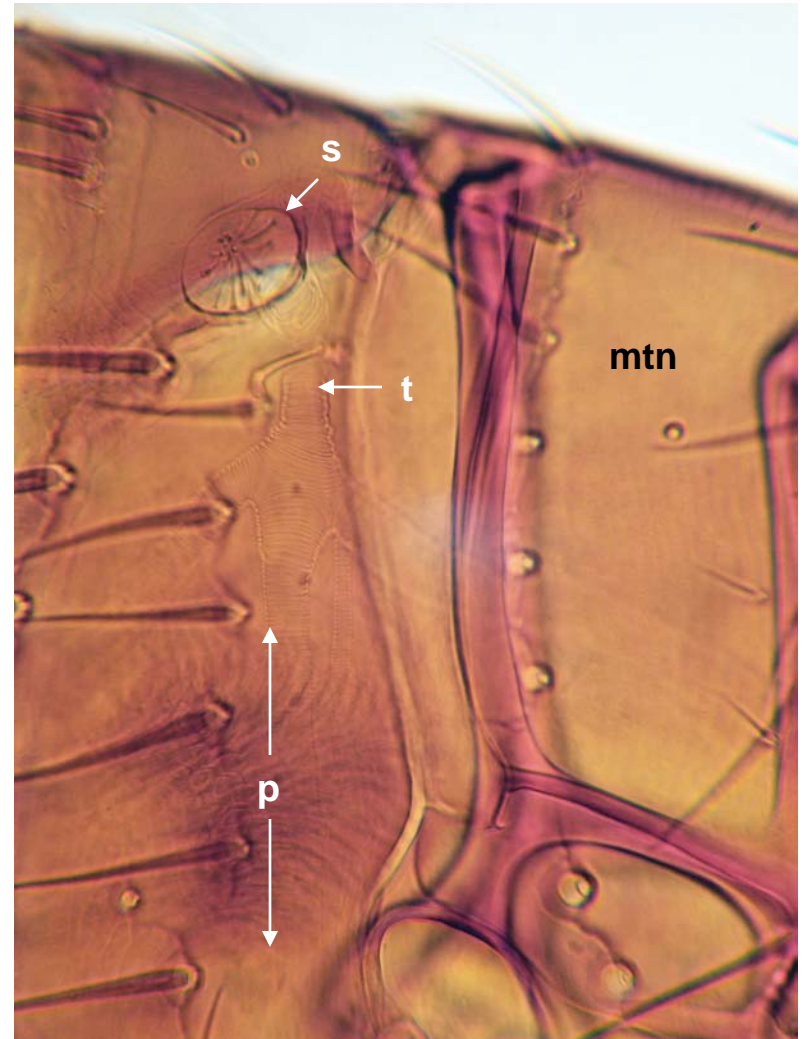
Head of *C. canis* (male, left; female, right). Head not as elongate as in *C. felis*, sometimes described as “helmet-shaped.” Anterior-most pair of genal teeth (arrows) considerably shorter than next pair of teeth. Note that this species possesses both genal and pronotal ctenidia.

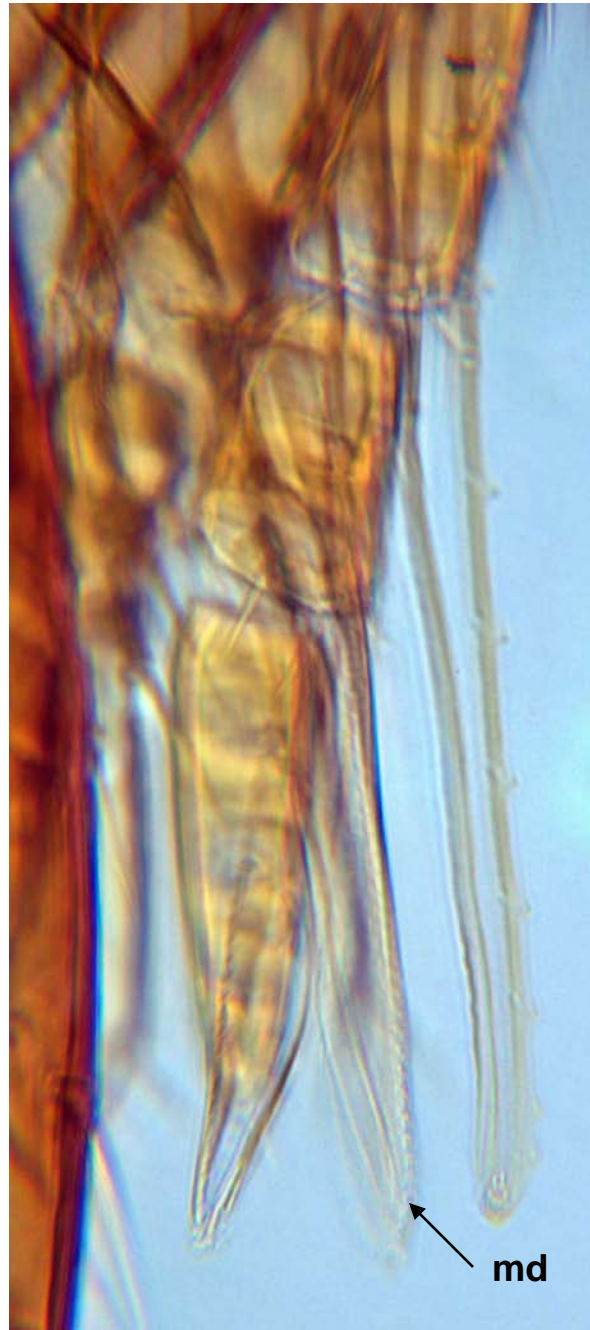
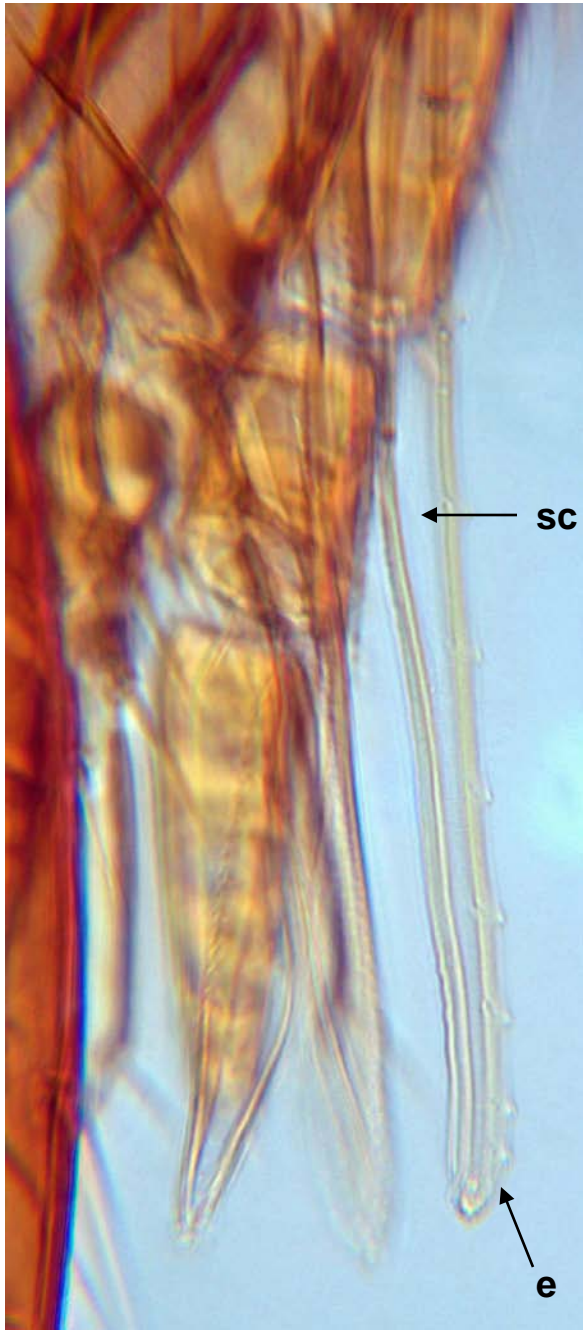




C. canis, spiracular fossa. Legend: f, fossa; s, sensillum; sp, spiracle; t, trachea.

C. canis, tracheal system. Legend:
mtn, metanotum; p, proventriculus;
s, spiracle; t, trachea.





C. canis, mouth parts.
Legend: e, epipharynx;
md, serrated mandibles
(maxillary laciniae of
some authors); sc,
salivary channel.